



**Fix Me!** Diese Seite wurde noch nicht vollständig übersetzt. Bitte helfen Sie bei der Übersetzung.

(diesen Absatz entfernen, wenn die Übersetzung abgeschlossen wurde)

## VMware Player / Fusion (VM)



### Vorbereitung durchgeführt?

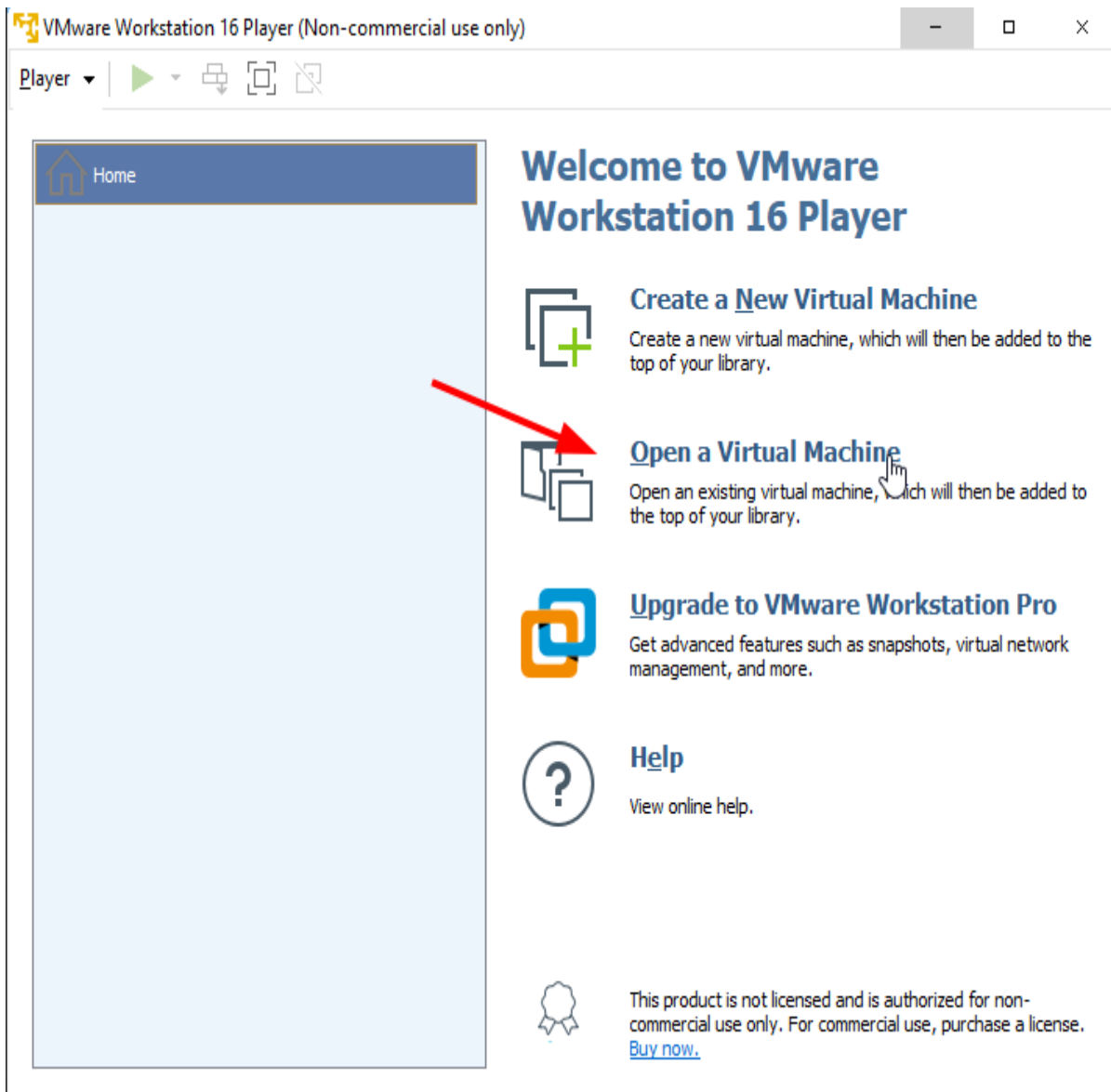
Lese Dir zuerst die → [Anleitung zur Vorbereitung](#) durch!

The zip file contains a couple of files, the important two are the .vmx and .vmdk files which have to be copied to a VMware machine folder (The folder can be located anywhere on the PC's harddisk).

Name	Size	Packed Size	Modified
DietPi_VMware-x86_64-Buster.vmdk	731 381 760	114 687 875	2020-07-31 21:01
DietPi_VMware-x86_64-Buster.vmx	2 378		2020-07-31 20:53
hash.txt	1 734		2020-07-31 21:03
README.md	10 510		2020-07-31 21:03

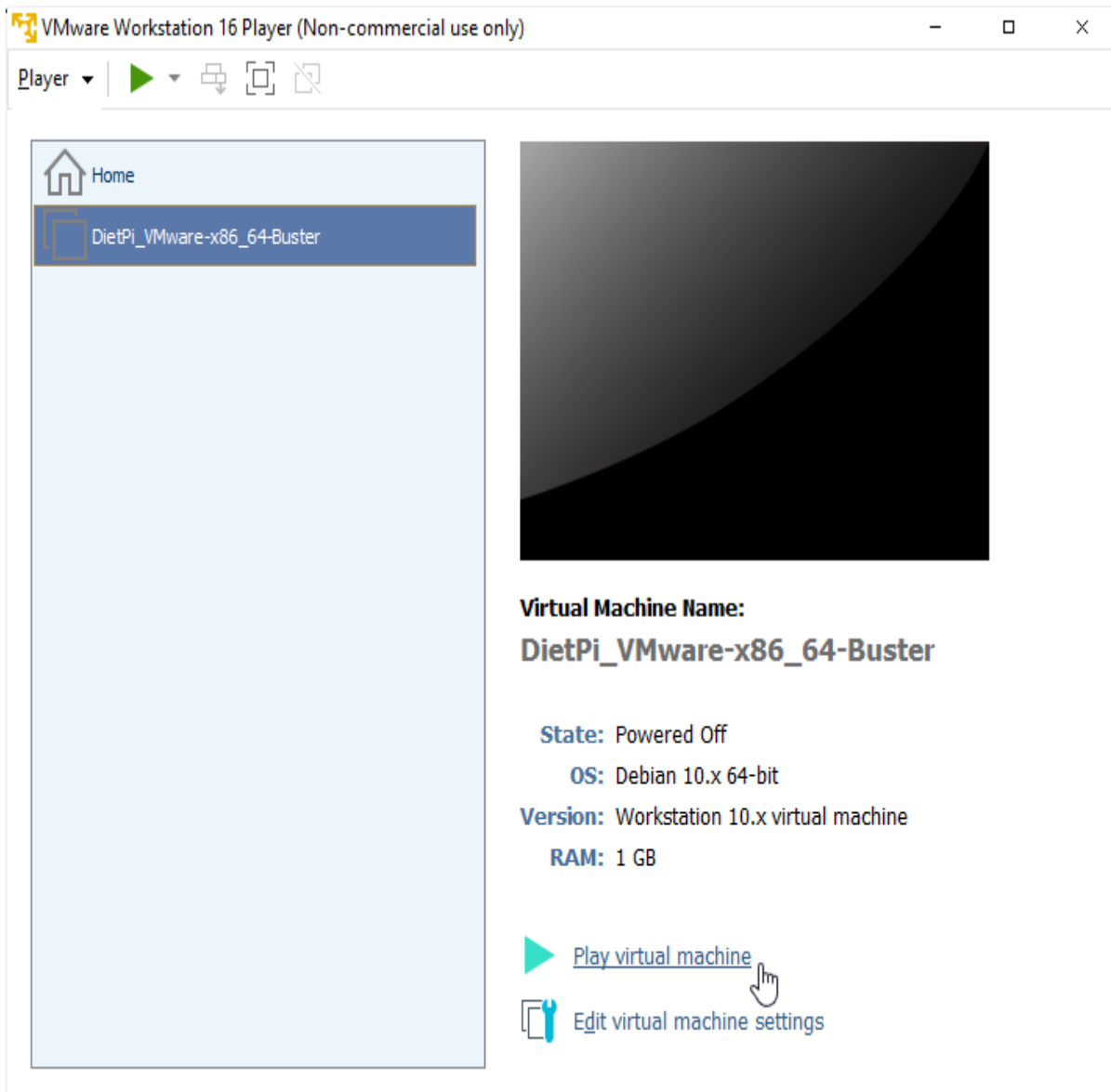
### Add the files in VMware

As next, the VMware virtual machine is setup by just opening the .vmx file (via **Open a Virtual Machine**):



In the following dialog the user has to navigate to the directory where the .vmx and .vmdk files were stored. Choose the .vmx file to open.

After this the DietPi VMware virtual machine is present and can be started:



## First boot of the new VMware image

Press the **Play virtual machine** (green arrow) to 'boot up' your system based on the DietPi image. Possibly you have to acknowledge in an appearing dialog "I Copied it" and go on. If you want to use a WiFi connection you have to change the network settings matching your environment (files `\boot\dietpi.txt` and `\boot\dietpi-wifi.txt`).

### You must disable IPv6 when the host uses WiFi



Sometimes the VM has difficulties to connect to the internet. This is reported in a network bridged mode and when the host connects to the internet via WiFi: In these cases the IPv6 routing between the VM and the internet fails (e.g. see there). A typical result is, that the system does not find the update server (e.g. at the very first update run). This is then signaled during the "apt update" procedure of the first boot startup. To overcome this, open a subshell (or an additional ssh window), start `dietpi-config` and disable **IPv6** within the Network options.



Then exit `dietpi-config`. After this the first time installer procedure should run again from the start.

## Additional information

For information about running DietPi in an VMware ESXi environment, you can read this article: [Running the DietPi VMware image on ESXi 6.7.](#)

# Weiter mit der LoxBerry Installation

→ [Nun geht es hier weiter mit der DietPi Erstkonfiguration](#)

From:

<https://wiki.loxberry.de/> - **LoxBerry Wiki - BEYOND THE LIMITS**

Permanent link:

[https://wiki.loxberry.de/installation\\_von\\_loxberry/die\\_installation\\_von\\_loxberry/vmware\\_player](https://wiki.loxberry.de/installation_von_loxberry/die_installation_von_loxberry/vmware_player)

Last update: **2024/01/01 18:56**