


Syslog Server

Autor	Tomas Zmatlik
Logo	
Status	PRE-RELEASE
Version	0.0.5
Min. LB Version	LB 1.0
Download	https://github.com/zmata/LoxBerry-Plugin-SyslogServer/archive/v0.0.5.zip
Zweck	Syslog Server (not only) for Miniserver logging
Languages	EN, CS, DE
Diskussion	Use comments

Version History...

Version 0.0.5

- Service restart after cfg change

Version 0.0.4

- Correction of the 'ü' in German

Version 0.0.3

- German Language added - many thanks to Riesenschnabel

Version 0.0.2

- Add Czech language
- Language corrections
- Link to wiki

Version 0.0.1

- First pre-release

Functionality of the plugin

The Syslog Server use the standard rsyslog package. It's possible to receive log entries from another system and stored them in separate log file.

For analyzing of log files is used [Adiscon LogAnalyzer](#)

Download

The current release can be found

here: <https://github.com/Gagi2k/LoxBerry-Plugin-WifiScanner/archive/v1.0-rc1.zip> <https://github.com/zmata/LoxBerry-Plugin-SyslogServer/archive/v0.0.5.zip>

All releases are listed here: <https://github.com/zmata/LoxBerry-Plugin-SyslogServer/releases>

Installation

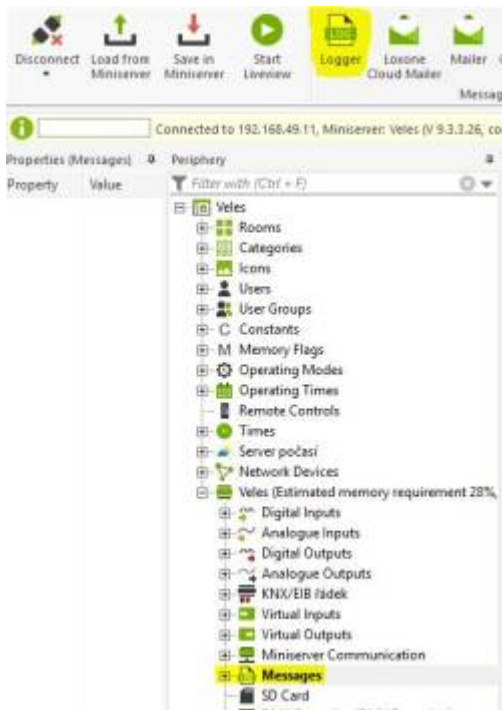
The plugin can be installed as zip file into LoxBerry. Similar to all other plugins.

Configuration options

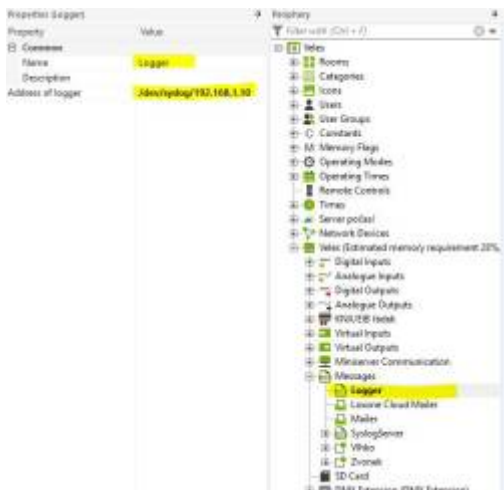
First click at the "New" button. Fill in a unique name and IP address of the Miniserver. It's all. Configuration of the rsyslog and LogAnalyzer is done by script.

Setup in the Loxone Config Software

Click at Messages in the Miniserver tree. Then click at Logger icon (or you can change settings of your current logger).



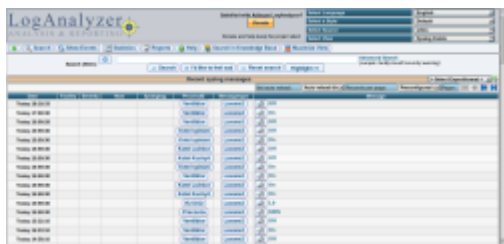
Logger is inserted. Fill name. In the "Address of Logger" fill something like `"/dev/syslog/192.168.1.10"`. Use IP address of your LoxBerry!



Alternatively, you can use the entry "/dev/udp/192.168.1.10/514", where "514" is the standard listening port of rsyslog. If you want to use another, you can change it in the /etc/rsyslog.conf as root.

Finally assign a new logger to where you need it.

Log Analyzer



In the upper right corner you can select Language, Style, Source (each configuration = one source), and View (actually Syslog is best for Miniserver Log).

My parser fill date (date and time), ProcessID (Subject), Messagetype (my internal type - log line type) and Message.

In case of the Miniserver log you should have Loxone(n) in the Messagetype field. Number n depend on settings of the rsyslog. If you don't change settings, there "Loxone2".

If there is trouble with some messages line from another system, please, send me part of the log file, and I'll update parser for it.

Forward Syslog to QNAP NAS

If you forward the syslog-messages to QNAP NAS the Log Analyzer is not receiving any more these messages!

Logger assignment in Loxone Config Software as per below snap required:



that version will work, but allocation of Logger name is not possible:

change loxberry (loxberry.conf) config file located in "/opt/loxberry/config/plugins/syslogserver/rsyslog.d/" to

loxberry.conf

```
:fromhost-ip, isequal, "MS-IP"  
/opt/loxberry/log/plugins/syslogserver/loxberry.log  
$template RFC3164fmt, "<%PRI%>%TIMESTAMP:::date-rfc3339% MS-IP MS-Host  
%msg:7:200%"  
:fromhost-ip, isequal, "MS-IP" @NAS-IP:514;RFC3164fmt  
& stop
```

adaption of placeholders according your values:

NAS-IP = IP adress for your QNAP-NAS with running syslog-server (e.g. 192.168.178.2)

MS-IP = IP adress for your Miniserver (e.g. 192.168.178.23)

MS-Host = Name of your Miniserver (e.g. Loxone_Miniserver)

The "loxberry.conf" can be downloaded/uploaded via ftp client software (e.g. filezilla)

QNAP-Syslog-Viewer:



QNAP-Syslog-File:

syslogfile

```
<13>1 2018-11-18T18:37:22.741611+01:00 192.168.178.23 Loxone_Miniserver - -  
- Loxone_Miniserver Logger_Fenster;FK_10_Buero_AUF#015  
<13>1 2018-11-18T18:37:33.270795+01:00 192.168.178.23 Loxone_Miniserver - -  
- Loxone_Miniserver Logger_Fenster;FK_10_Buero_ZU#015
```

known issues:

- MS-Host is repeated in Message column
- LF (#015) is shown at the end of the Message column

Asking questions and reporting problems

Questions about the plugin will be answered in this wiki page. Please report your errors [here](#). English or Czech language, please.

From:

<https://wiki.loxberry.de/> - **LoxBerry Wiki - BEYOND THE LIMITS**

Permanent link:

https://wiki.loxberry.de/plugins/syslog_server/start?rev=1662805132

Last update: **2022/09/10 12:18**